

# 2009 Calendar



We make it visible.

## Competition Entry Form

Title	First Name	Last Name
Practice	Position	
Address	Suburb	
State	Postcode	Country
Phone No.	Fax No.	Email

List ZEISS equipment used

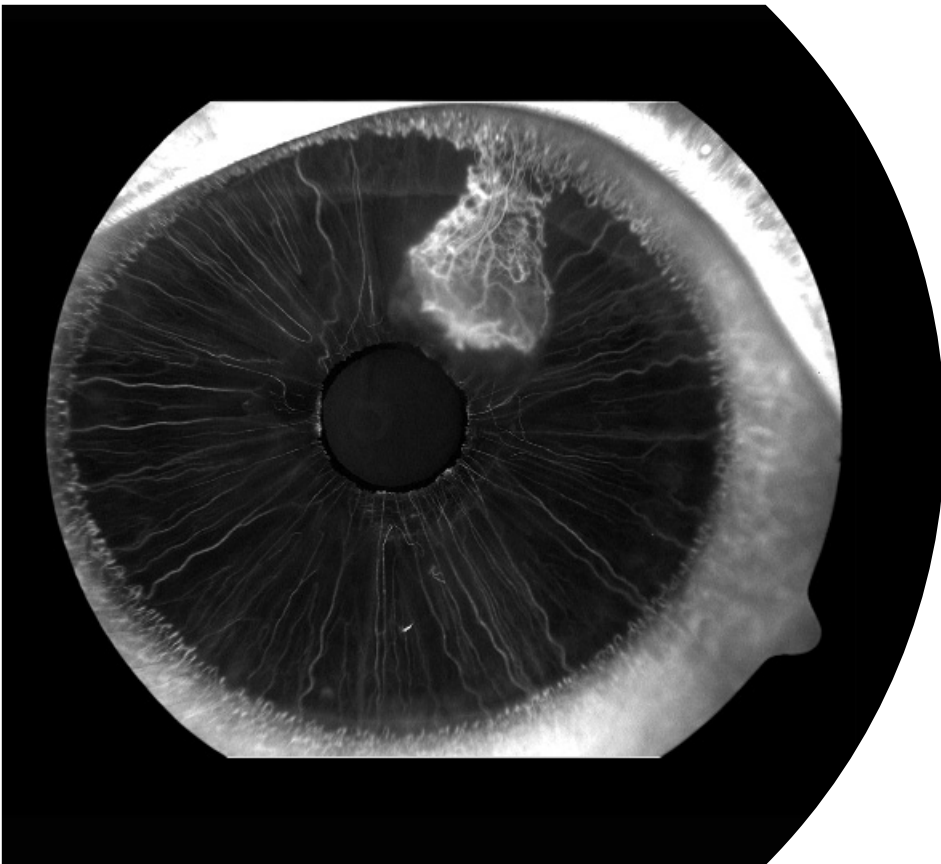
Carl Zeiss Pty Ltd

Unit 13, 2 Eden Park Drive  
North Ryde NSW 2112  
Australia

Ph: 02 9020 1333  
Fax: 02 9020 1330  
Email: d.liang@zeiss.com.au  
www.zeiss.com.au



We make it visible.



# 2009 Carl Zeiss Ophthalmic Imaging Calendar Competition

## Entries NOW OPEN!

We are very pleased to announce the opening of the 2009 Carl Zeiss Ophthalmic Imaging Calendar Competition.

Now in its third year, the imaging calendar has not only showcased some fantastic ophthalmic images taken by clinicians from Australia and New Zealand, but also provided valuable patient and clinical education.

If you have any interesting images taken with the following ZEISS equipment, then wait no longer. Submit your images and you could not only be featured in the 2009 calendar but if selected as the ultimate winner, you could win yourself this outstanding SONY DSLR A350x Camera valued at \$1399 AUD.

- VISUCAM *Lite*
- VISUCAM *NM/FA*
- FF 450 *plus*
- Stratus OCT™
- Slit Lamps
- VISUCAM *PRO NM™*
- FF 450
- Visante™ OCT
- Cirrus™ OCT
- Vintage series

### How to enter

#### Step 1: Express your interest

Complete the competition entry form on the back and fax, email or post it to Danni Liang

Fax: 02 9020 1330

Email: [d.liang@zeiss.com.au](mailto:d.liang@zeiss.com.au)

Post: Carl Zeiss Pty Ltd  
Unit 13, 2 Eden Park Drive  
North Ryde NSW 2113 Australia

#### Step 2: Submit your images

Submit your images in TIFF format with a short explanation of the pathology via email to Danni Liang at [d.liang@zeiss.com.au](mailto:d.liang@zeiss.com.au). Alternatively save your images on a CD and post it to us with your name and contact details and you are on your way to winning!

(Please see below for full terms and conditions)

**Entries close on 3 October 2008**

**SONY.**

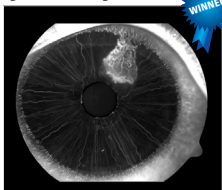


#### α SONY DSLR A350x Camera with Twin Lens

- Quick AF Live View
- Variable Angle LCD
- Super Steady Shot
- 14.2 Mega Pixel CCD
- Includes 18 - 70mm and 55 - 200mm lenses

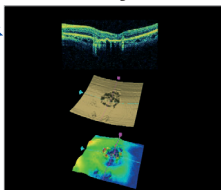
## Top 12 from last year!

### january



Anton Drew, SA

### february



Stav Stylianou, VIC

### march



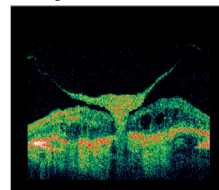
Dr Sean Every, Christchurch

### april



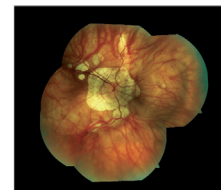
Dr Lance Liu, VIC

### may



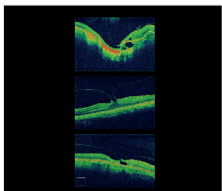
Dr George H C Wong, SA

### june



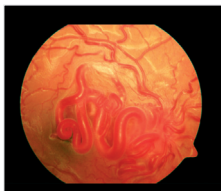
Robert Ames, SA

### july



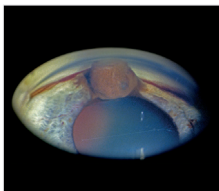
Dr Alex P Hunyor, NSW

### august



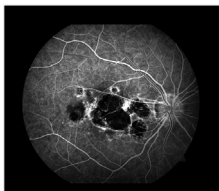
Kate Colless, QLD

### september



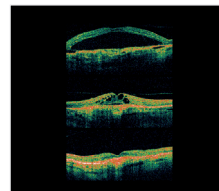
Chris Barry, WA

### october



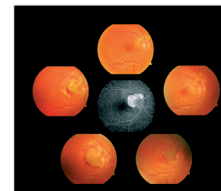
Corinne Brignell, ACT

### november



Mara Giribaldi, NSW

### december



Tyran Preece, QLD

### Terms and Conditions of Entry

Entry is open to ophthalmic photographers, Physicians and Optometrists who are Australian and New Zealand residents. Entries will only be considered if the images were taken with Carl Zeiss equipment. Any images submitted will become the property of the promoter and may be used for promotional purposes. Judges decision is final and no correspondence will be entered into. Prize is not transferable or redeemable for cash. Employees of Carl Zeiss are ineligible to enter. The competition commences on Monday, 18 August 2008 and closes on Friday, 3 October 2008. Winning result will be published on [www.zeiss.com.au](http://www.zeiss.com.au) and the winner will be notified by phone and email on Monday, 10 November 2008.