

Calienobar

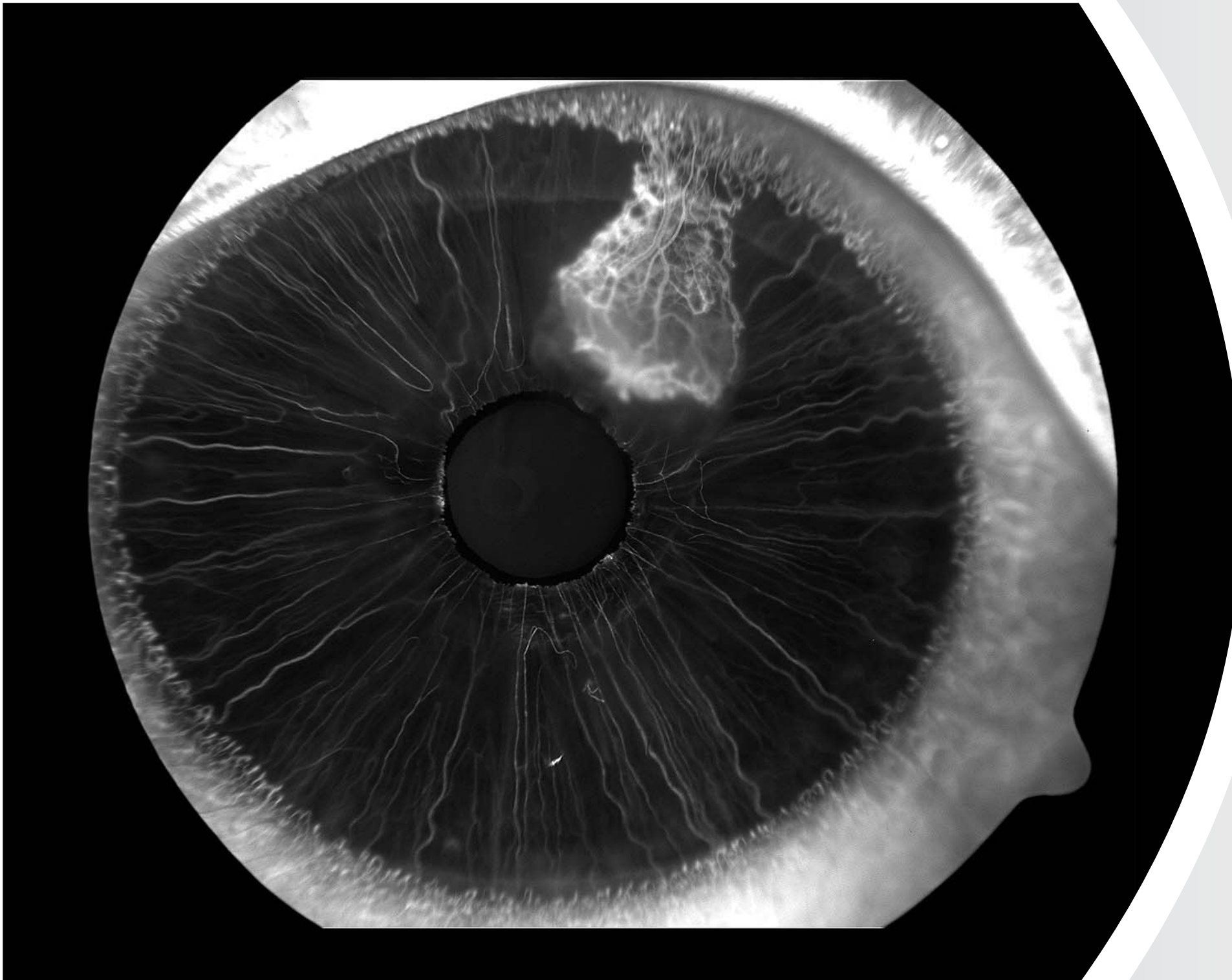


We make it visible.

January



FF450^{plus} Fundus Camera



**FF450^{plus} Fundus Image by
Anton Drew, The Queen Elizabeth Hospital, SA, Australia**

Anterior segment fluorescein angiogram to demonstrate corneal vascularisation in a case of calcific keratopathy.

Sunday	Monday	Tuesday	Wednesday	Thursday	Friday	Saturday
		1 New Year's Day	2 Day After New Year's Day (NZ)	3	4	5
6	7	8	9 Devonport Cup Day* (TAS) ■ Sydney Eye Hospital Registrars Symposium, 9 - 11 January, Sydney, Australia	10	11	12 ■ Snow Based Eyecare Conference, 12 January, Italy, Europe
13	14 Anniv. Day* Southland (NZ)	15	16	17	18	19
20 ■ Hawaiian Eye 2008, 20 - 25 January, Hawaii	21 Anniv. Day* Wellington (NZ)	22	23	24	25	26
27	28 Australia Day (AU) Anniv. Day* Auckland (NZ)	29	30	31		

Public holiday | * Regional holiday only | ■ Exhibition

Carl Zeiss Australia

Ph: 1300 365 470
 Fx: 1300 552 796
 Email: med@zeiss.com.au
 Website: www.zeiss.com.au

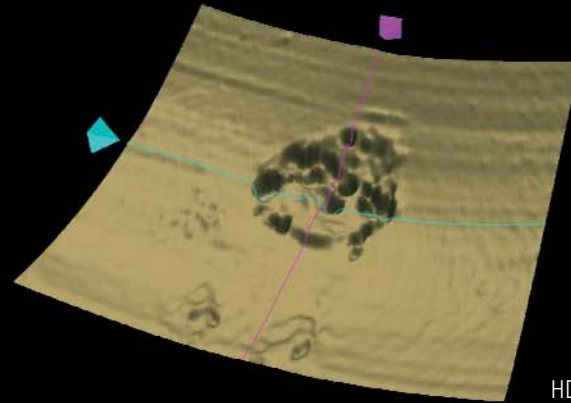
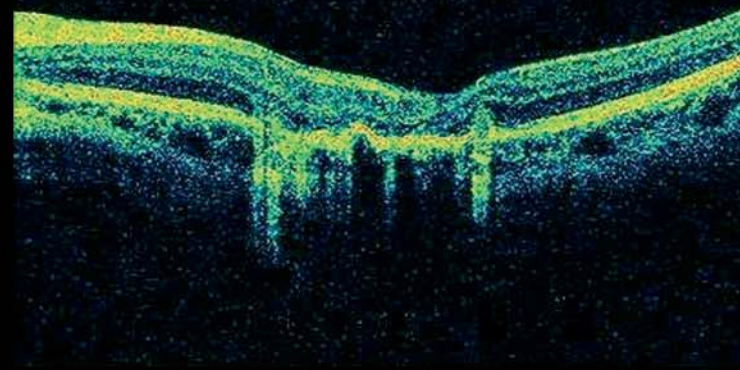
Carl Zeiss New Zealand

Ph: 0800 334 353
 Fx: 09 837 5619
 Email: med@zeiss.com.au
 Website: www.zeiss.com.au

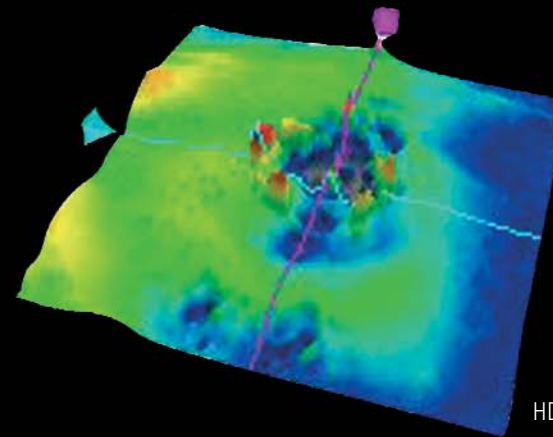


We make it visible.

February



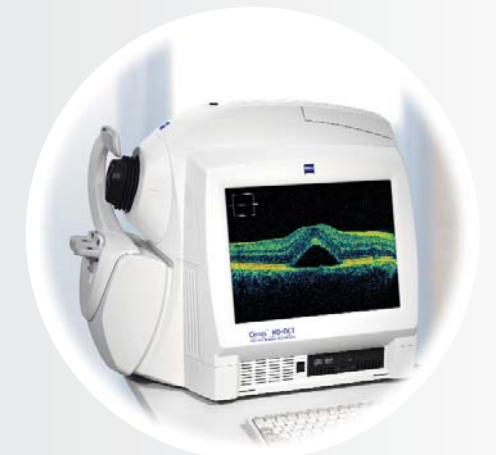
HD layer map of RPE



HD retinal thickness map

**Cirrus™ HD-OCT Image by
Stav Stylianou, Eye Surgery Associates, VIC, Australia**

Stable chorioretinal scar following successful vitrectomy removal of subfoveal neovascular membrane.



Cirrus™ HD-OCT

Sunday	Monday	Tuesday	Wednesday	Thursday	Friday	Saturday
					1	2
3	4 Anniv. Day* Nelson (NZ)	5	6 Waitangi Day (NZ)	7	8	9
10	11 Royal Hobart Regatta* (TAS)	12	13	14	15	16
17	18	19	20	21	22	23
24	25	26	27 Launceston Cup* (TAS)	28	29	

■ 25th Cornea & Eye Bank Meeting,
21 - 22 February, Brisbane, Australia

Public holiday | * Regional holiday only | ■ Exhibition | ■ Up Skill Course, February, Sydney, Australia - Dates TBC

Carl Zeiss Australia

Ph: 1300 365 470
 Fx: 1300 552 796
 Email: med@zeiss.com.au
 Website: www.zeiss.com.au

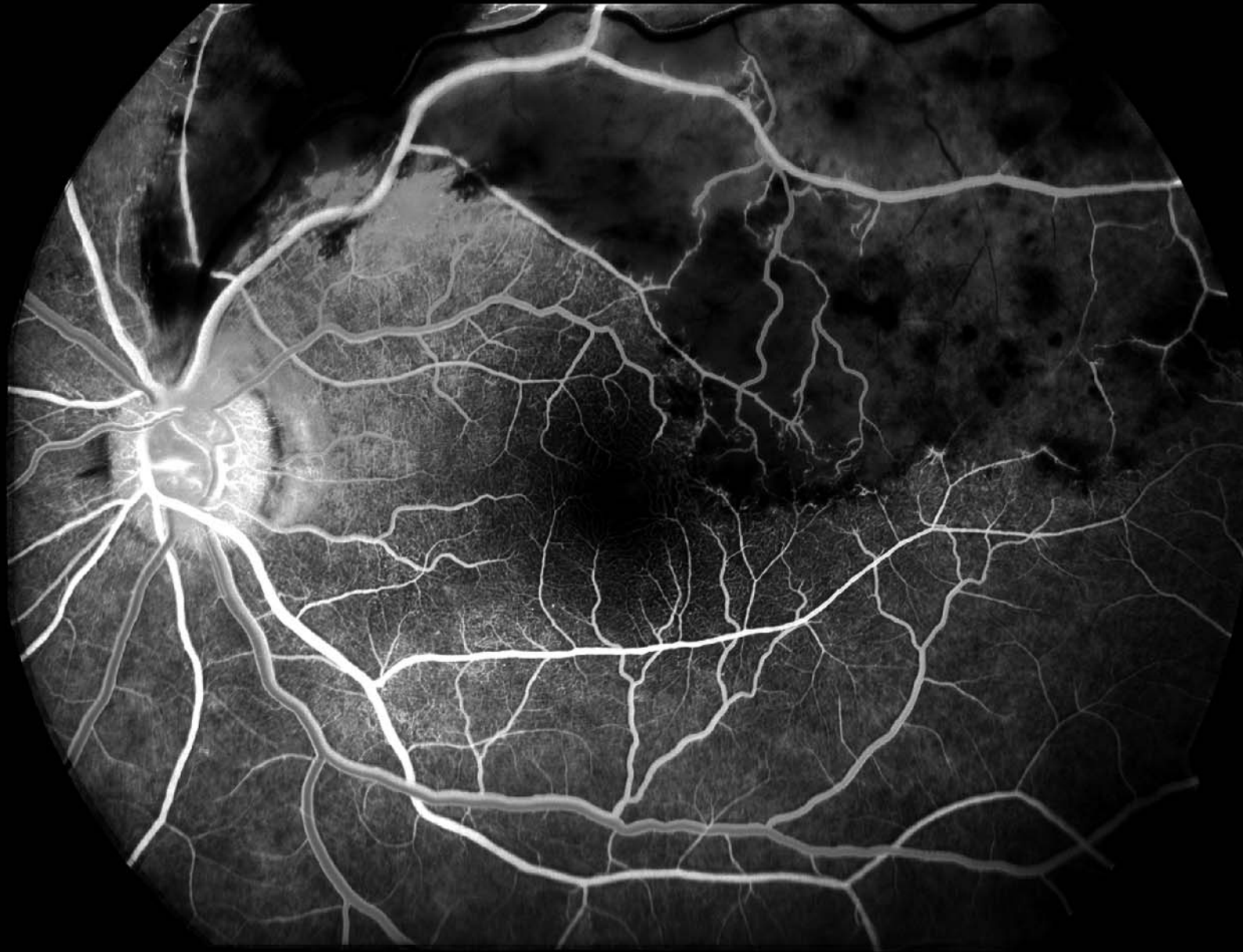
Carl Zeiss New Zealand

Ph: 0800 334 353
 Fx: 09 837 5619
 Email: med@zeiss.com.au
 Website: www.zeiss.com.au



We make it visible.

March



**FF450^{plus} Fundus Image by
Dr Sean Every, Fendalton Eye Clinic, Christchurch, New Zealand**
Ischaemic supero-temporal branch retinal vein occlusion with macular oedema.



FF450^{plus} Fundus Camera

Sunday	Monday	Tuesday	Wednesday	Thursday	Friday	Saturday
30 Daylight Savings Ends (WA)	31					1
2 ■ Cornea & Contact Lens Society of New Zealand, 2 March, Auckland, New Zealand	3 Labour Day (WA)	4 King Island Show* (TAS)	5	6 ■ World Glaucoma Day, 6 March	7 ■ Tasmanian Operating Room Nurses Conference, 7 - 8 March, Wrest Point, Australia	8 ■ North American Neuro-Ophthalmology Society, 8 - 12 March, Orlando, Florida
9	10 Eight Hours Day (TAS) Labour Day (VIC) Anniv. Day* Taranaki (NZ) Adelaide Cup Day (SA) Canberra Day (ACT)	11	12	13	14	15
16	17	18	19	20	21 Good Friday	22 Easter Saturday (Ex. TAS, WA, NZ)
23 Easter Sunday	24 Easter Monday	25 Easter Tuesday (TAS) Anniv. Day* Otago (NZ)	26	27	28 ■ ANZ Glaucoma Interest Group Scientific Meeting, 28 - 29 March, Melbourne, Australia ■ Queensland Vision, 28 - 30 March, Gold Coast, Australia	29

Public holiday | * Regional holiday only | ■ Exhibition

Carl Zeiss Australia

Ph: 1300 365 470
 Fx: 1300 552 796
 Email: med@zeiss.com.au
 Website: www.zeiss.com.au

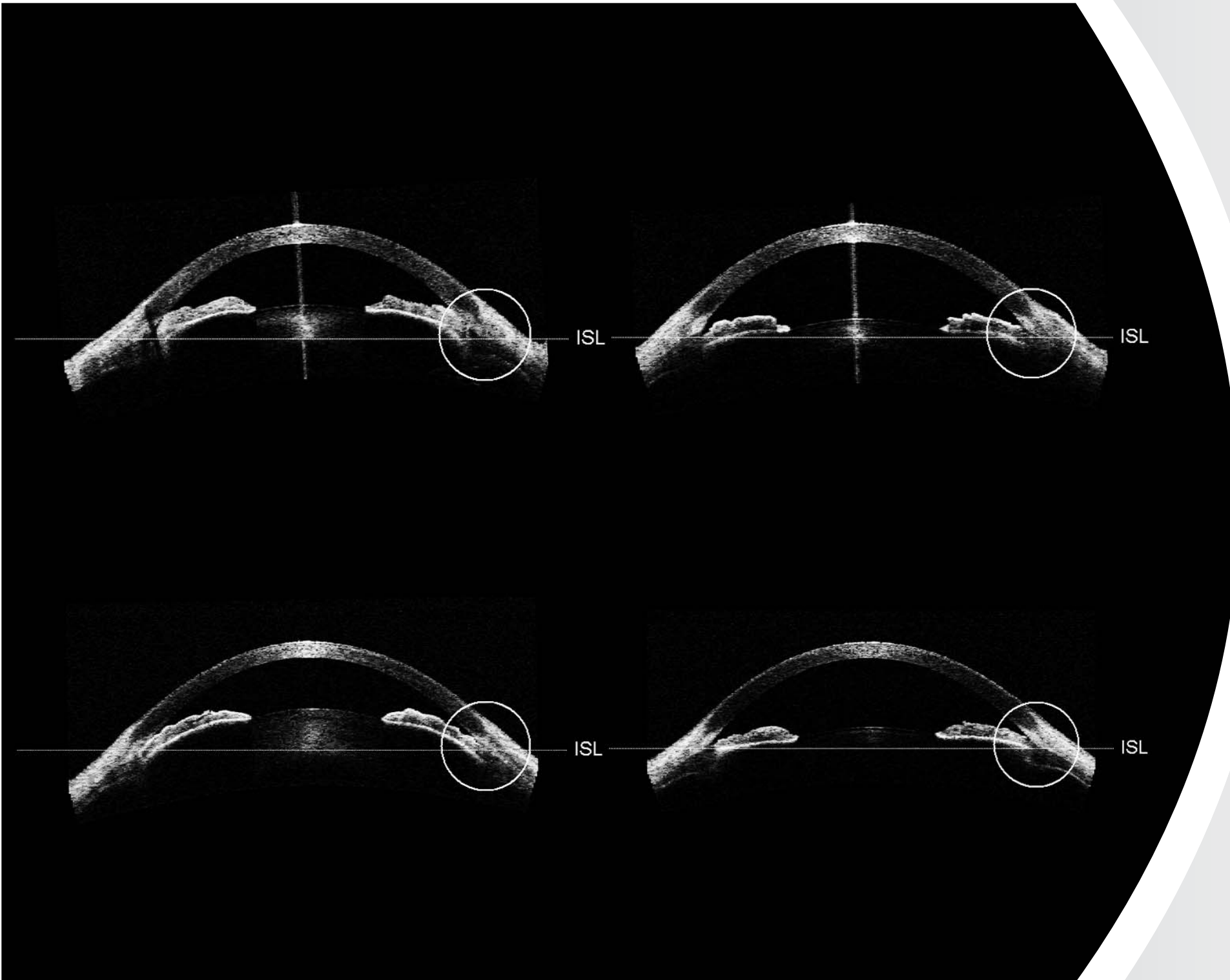
Carl Zeiss New Zealand

Ph: 0800 334 353
 Fx: 09 837 5619
 Email: med@zeiss.com.au
 Website: www.zeiss.com.au



We make it visible.

April



**Visante™ OCT Image by
Dr Lance Liu, Preston Eye Clinic, VIC, Australia**

Various mechanisms of angle closure:

Top left image - Multi-mechanism. Top right image - Pupil block. Bottom left image - Lens induced. Bottom right image - Plateau iris.



Visante™ OCT

Sunday	Monday	Tuesday	Wednesday	Thursday	Friday	Saturday
		1	2	3	4	5
6 Daylight Savings Ends (ACT, NSW, VIC, SA, TAS, NZ)	7	8	9	10	11	12
13	14	15	16	17	18	19
20	21	22	23	24	25 Anzac Day	26
27	28	29	30			

Public holiday | * Regional holiday only | ■ Exhibition

Carl Zeiss Australia

Ph: 1300 365 470
 Fx: 1300 552 796
 Email: med@zeiss.com.au
 Website: www.zeiss.com.au

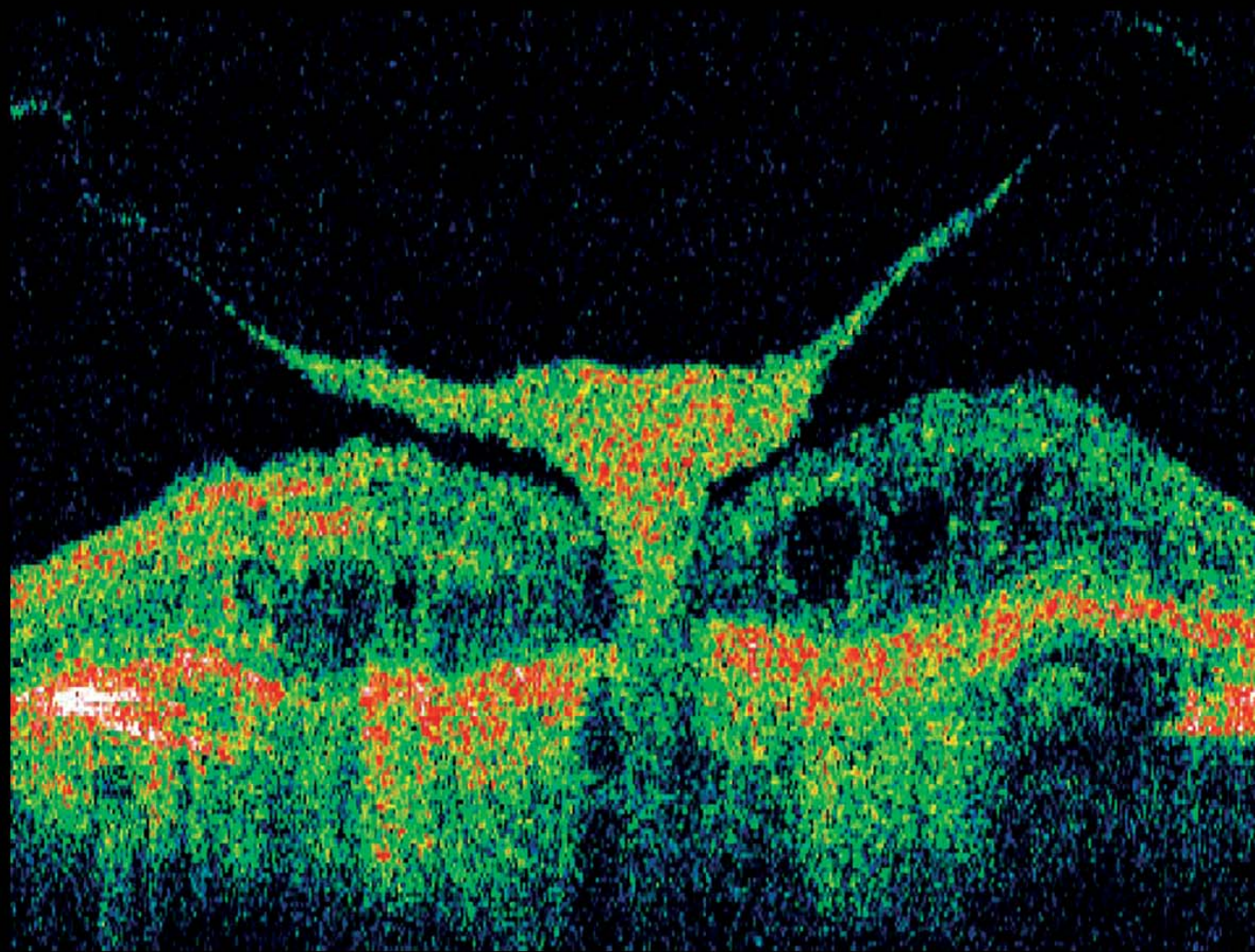
Carl Zeiss New Zealand

Ph: 0800 334 353
 Fx: 09 837 5619
 Email: med@zeiss.com.au
 Website: www.zeiss.com.au



We make it visible.

May



**Stratus OCT™ Image by
Dr George H C Wong, Marion Road Eye Clinic, SA, Australia**

Foveal Vitreochoroidal Anastomosis. The wing appearance of vitreal fibrovascular membrane looks like "the horns of the devil" in the eye. This type of anastomosis gives rise to vitreous haemorrhages in advance cases of age related macular degeneration when posterior vitreous detachment occurs.



Stratus OCT™

Sunday	Monday	Tuesday	Wednesday	Thursday	Friday	Saturday
				1	2 AGFEST* Circular Head Only (TAS)	3
4	5 May Day (NT) Labour Day (QLD)	6	7	8	9	10
11 Mother's Day	12	13	14	15	16	17
18	19	20	21	22	23	24
25	26	27	28	29	30	31

Public holiday | * Regional holiday only | ■ Exhibition

Carl Zeiss Australia

Ph: 1300 365 470
 Fx: 1300 552 796
 Email: med@zeiss.com.au
 Website: www.zeiss.com.au

Carl Zeiss New Zealand

Ph: 0800 334 353
 Fx: 09 837 5619
 Email: med@zeiss.com.au
 Website: www.zeiss.com.au



We make it visible.

June



**VISUCAM^{PRO NM} Fundus Image by
Robert Ames, Gawler Optical, SA, Australia**
Pathology of right eye consistent with significant myopic degeneration.



VISUCAM^{PRO NM} Fundus Camera

Sunday	Monday	Tuesday	Wednesday	Thursday	Friday	Saturday
1	2 Foundation Day (WA) Queen's Birthday (NZ)	3	4	5	6	7
■ 8 th Congress of the European Glaucoma Society, 1 - 6 June, Berlin, Germany			■ The Spine & Pediatric Sections Congress, 4 - 7 June, Jeju, Korea			
8	9 Queen's Birthday (Ex. WA, NZ) Volunteer's Day (SA)	10	11	12	13	14
15	16	17	18	19	20	21
22	23	24	25	26	27	28
				■ WOC & APAO Congress, 26 June - 2 July, Hong Kong, China		
29	30					

Public holiday | * Regional holiday only | ■ Exhibition

Carl Zeiss Australia

Ph: 1300 365 470
 Fx: 1300 552 796
 Email: med@zeiss.com.au
 Website: www.zeiss.com.au

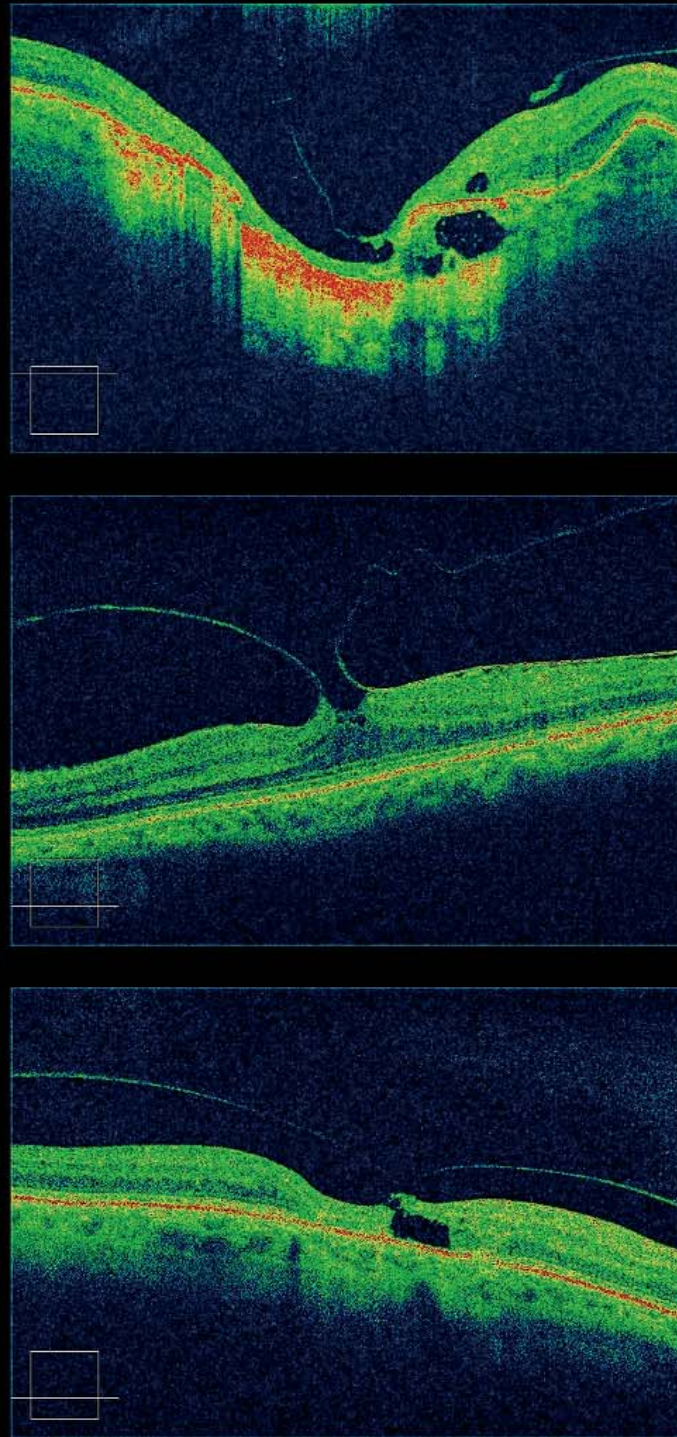
Carl Zeiss New Zealand

Ph: 0800 334 353
 Fx: 09 837 5619
 Email: med@zeiss.com.au
 Website: www.zeiss.com.au



We make it visible.

July

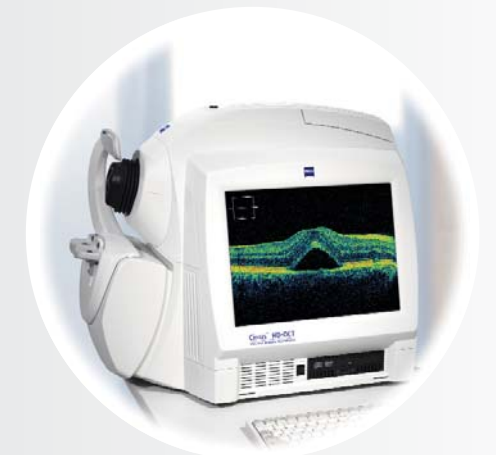


**Cirrus™ HD-OCT Image by
Dr Alex P Hunyor, Retina Associates, NSW, Australia**

1st image - Subretinal neovascularisation arising at the edge of a macular coloboma.

2nd image - Vitreomacular traction with epiretinal membrane

3rd image - Type 2A juxtafoveal telangiectasia with eccentric macular hole



Cirrus™ HD-OCT

Sunday	Monday	Tuesday	Wednesday	Thursday	Friday	Saturday
		1	2	3	4 Alice Spring Show Day* (NT)	5
6	7	8	9	10	11 Tennant Creek Show Day* (NT) ■ AUSCRS, 11 - 14 July, Queensland, Australia	12
13	14	15	16	17	18 Katherine Show Day* (NT)	19
20	21	22	23	24	25 Darwin Show Day* (NT)	26 ■ Sydney Eye Hospital Alumni Association Biennial Conference, 26 July, Sydney, Australia
27	28	29	30	31		

Public holiday | * Regional holiday only | ■ Exhibition

Carl Zeiss Australia

Ph: 1300 365 470
 Fx: 1300 552 796
 Email: med@zeiss.com.au
 Website: www.zeiss.com.au

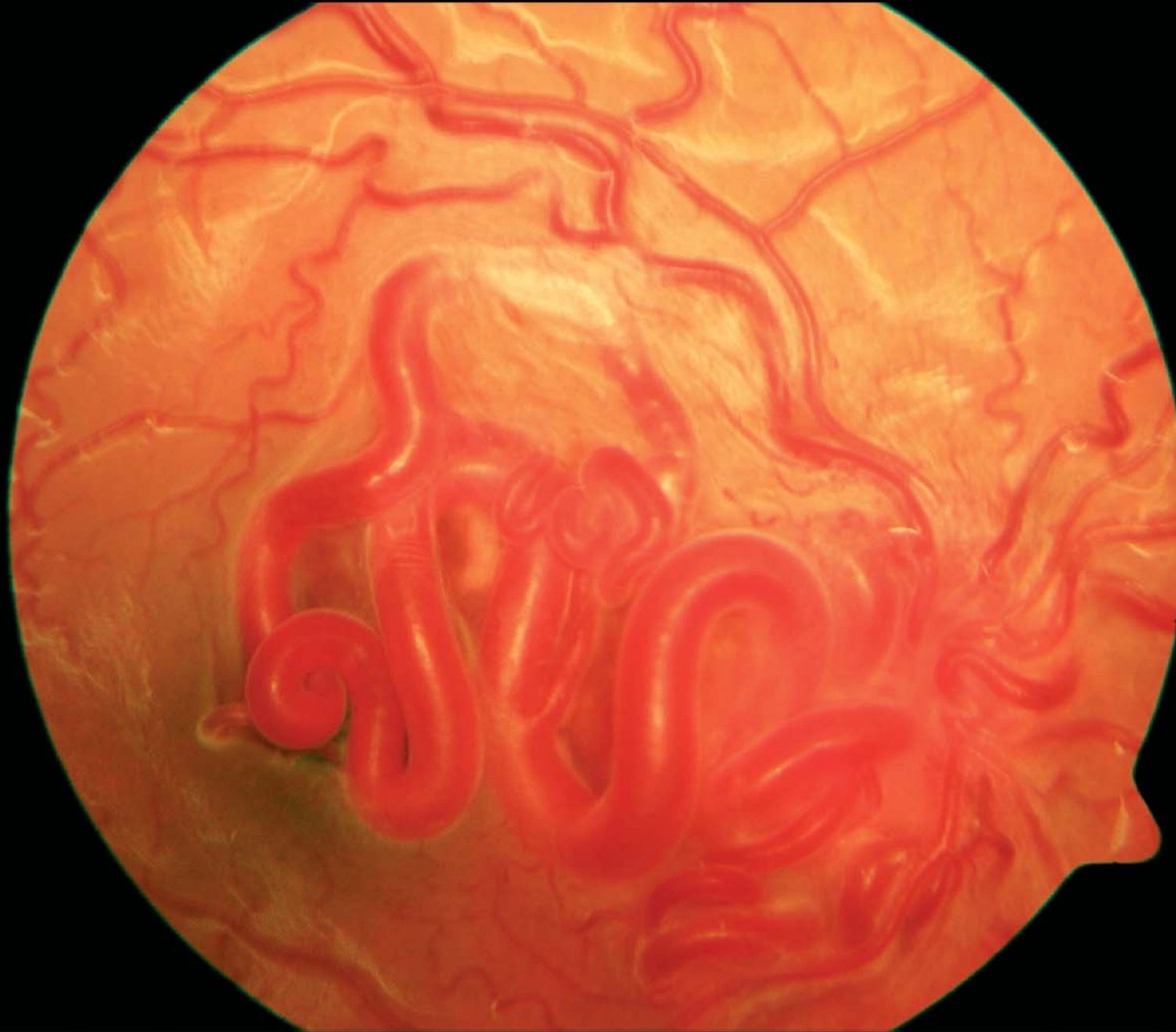
Carl Zeiss New Zealand

Ph: 0800 334 353
 Fx: 09 837 5619
 Email: med@zeiss.com.au
 Website: www.zeiss.com.au



We make it visible.

August



**FF450^{plus} Fundus Image by
Kate Colless, Sunshine Eye Clinic, QLD, Australia**

This 10 year old girl presented for review of R racemose hemangiomas (Wyburn-Mason Syndrome), a rare congenital disorder characterised by arterio-venous malformations of the brain and retina. Her vision was R 6/18 and she had a R esotropia.



FF450^{plus} Fundus Camera

Sunday	Monday	Tuesday	Wednesday	Thursday	Friday	Saturday
31					1	2
3	4 Bank Holiday* (AU) Picnic Day (NT)	5	6	7	8	9
10	11	12	13 Royal Queensland Show* Brisbane Metro Area Only (QLD) ■ RANZCO QLD Branch Meeting, 13 - 16 August, Gold Coast, Australia	14	15 Borroloola Show Day* (NT) ■ WAVE 2008, 8 - 10 August, Western Australia	16
17	18	19	20	21	22	23
24	25	26	27	28	29	30

Public holiday | * Regional holiday only | ■ Exhibition

Carl Zeiss Australia

Ph: 1300 365 470
 Fx: 1300 552 796
 Email: med@zeiss.com.au
 Website: www.zeiss.com.au

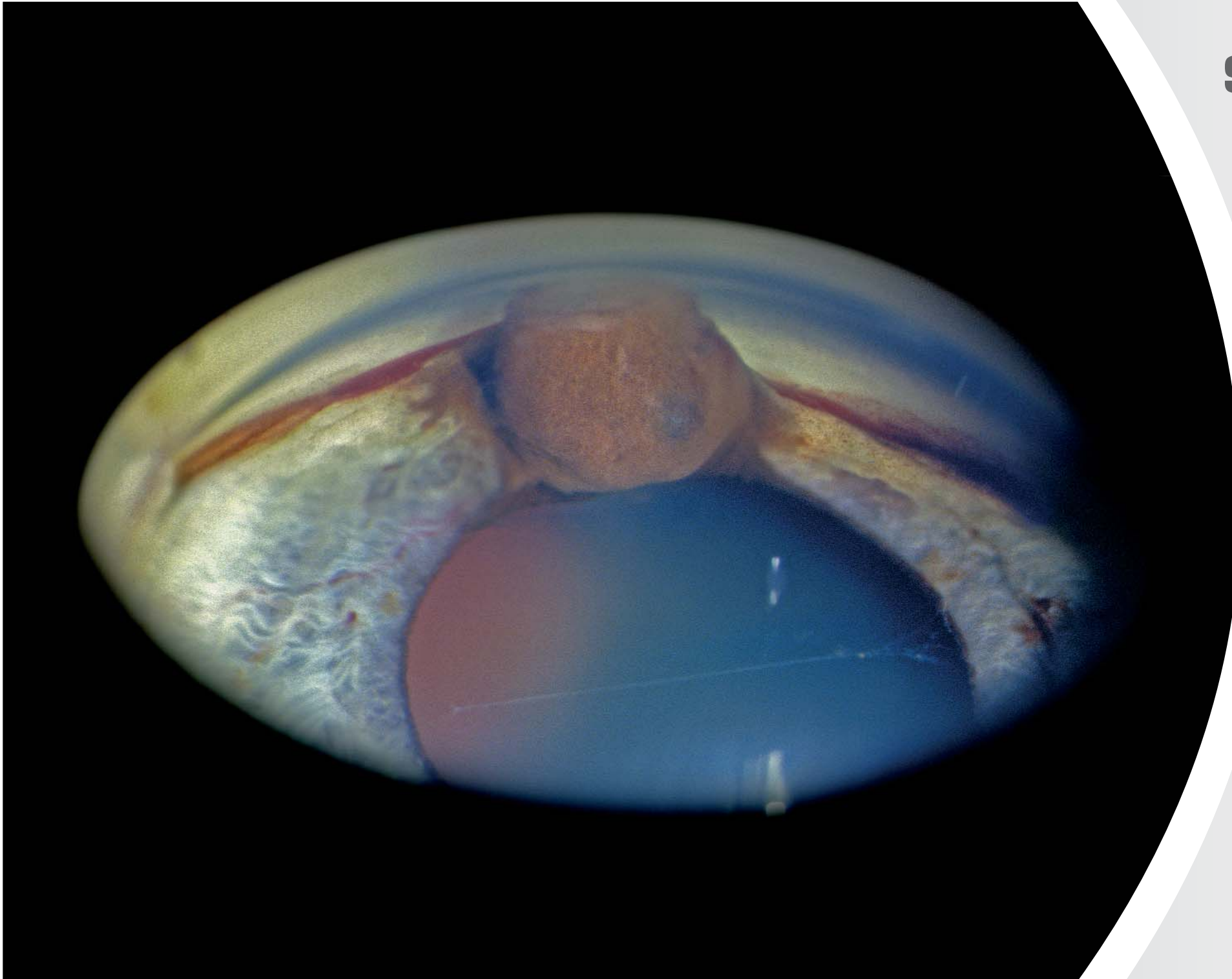
Carl Zeiss New Zealand

Ph: 0800 334 353
 Fx: 09 837 5619
 Email: med@zeiss.com.au
 Website: www.zeiss.com.au



We make it visible.

September



**Vintage Series SL40P Photo Slit Lamp Image by
Chris Barry, Lions Eye Institute, WA, Australia**

Iris melanoma - a gonio lens in contact with the cornea has been used to tangentially image this tumour.



SL130 Slit Lamp

Sunday	Monday	Tuesday	Wednesday	Thursday	Friday	Saturday
	1	2	3	4	5	6
7 Father's Day	8	9	10	11	12	13
14	15 ■ 8 th General Assembly of IAPB, 15 - 20 September, Buenos Aries, Argentina	16	17	18	19	20 ■ ESCRS, 13 - 17 September, Berlin, Germany ■ OAA NSW Branch Continuing Education Conference, 20 - 21 September, Sydney, Australia
21	22 Anniv. Day* Canterbury South (NZ)	23	24	25	26	27
28 Daylight Savings Commences (NZ)	29 Queen's Birthday (WA)	30				

Public holiday | * Regional holiday only | ■ Exhibition

Carl Zeiss Australia

Ph: 1300 365 470
 Fx: 1300 552 796
 Email: med@zeiss.com.au
 Website: www.zeiss.com.au

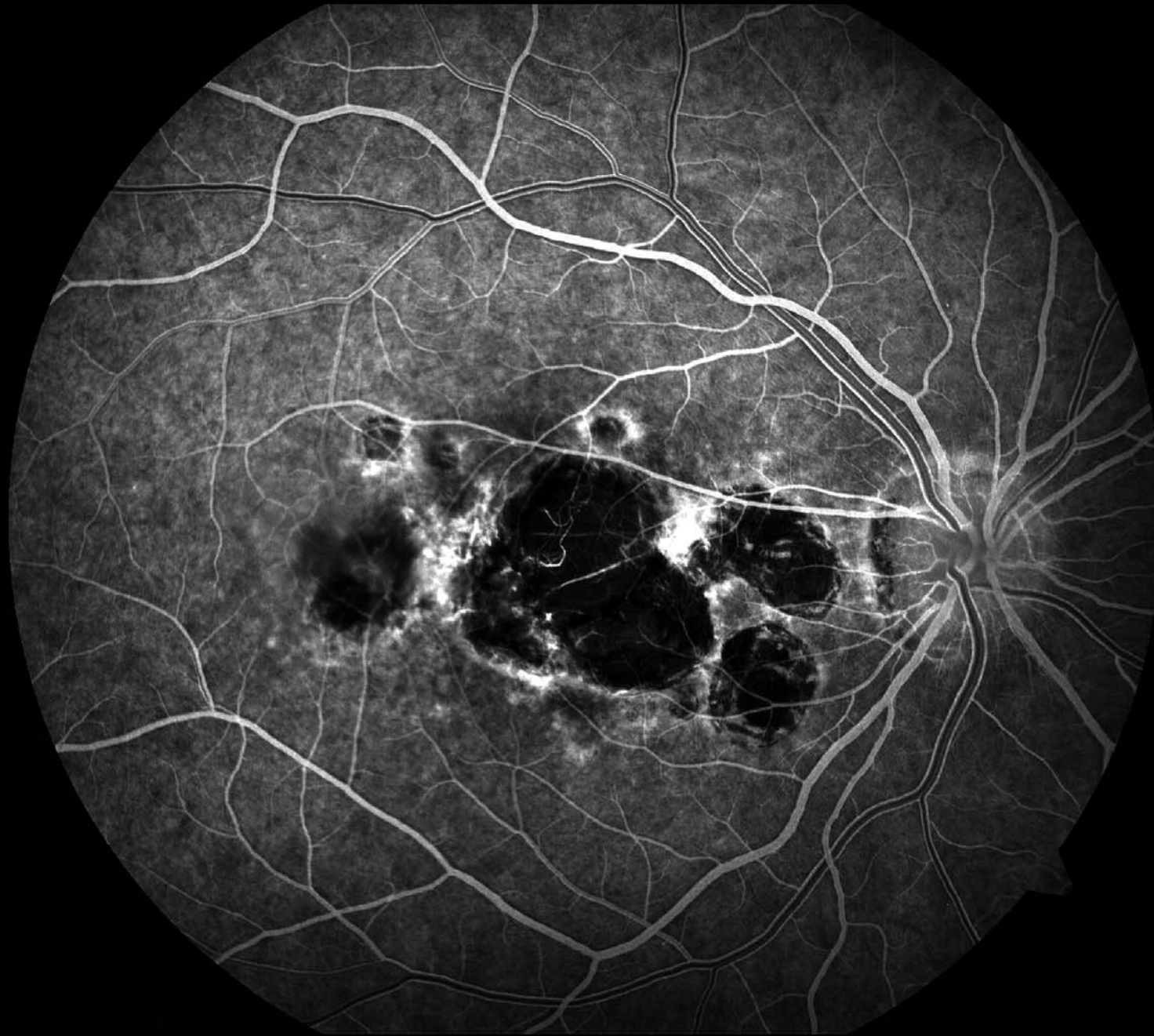
Carl Zeiss New Zealand

Ph: 0800 334 353
 Fx: 09 837 5619
 Email: med@zeiss.com.au
 Website: www.zeiss.com.au



We make it visible.

October



VISUCAM^{NMFA} Fundus Image by
Corinne Brignell, Canberra Eye Hospital, ACT, Australia
Toxoplasmosis corioretinitis.



VISUCAM^{NMFA} Fundus Camera

Sunday	Monday	Tuesday	Wednesday	Thursday	Friday	Saturday
			1	2 <ul style="list-style-type: none"> Vision West Expo, 2 - 5 October, Las Vegas, Nevada INZAO Conference, 2 - 5 October, Wellington, New Zealand 	3 Burnie Show* (TAS)	4
5 Daylight Savings Commences (ACT, NSW, VIC, SA, TAS)	6 Labour Day (ACT, NSW, SA)	7	8	9 Royal Launceston Show* (TAS)	10	11
12	13	14	15	16	17 Flinders Island Show* (TAS)	18
19 <ul style="list-style-type: none"> NZ Orthopaedic Association Annual Scientific Meeting, 19 - 23 October, Napier, New Zealand 	20	21	22	23 Royal Hobart Show* (TAS)	24 Anniv. Day* Hawkes' Bay (NZ)	25
26 Daylight Savings Commences (WA)	27 Labour Day (NZ)	28	29	30	31	

Public holiday | * Regional holiday only | ■ Exhibition

Carl Zeiss Australia

Ph: 1300 365 470
 Fx: 1300 552 796
 Email: med@zeiss.com.au
 Website: www.zeiss.com.au

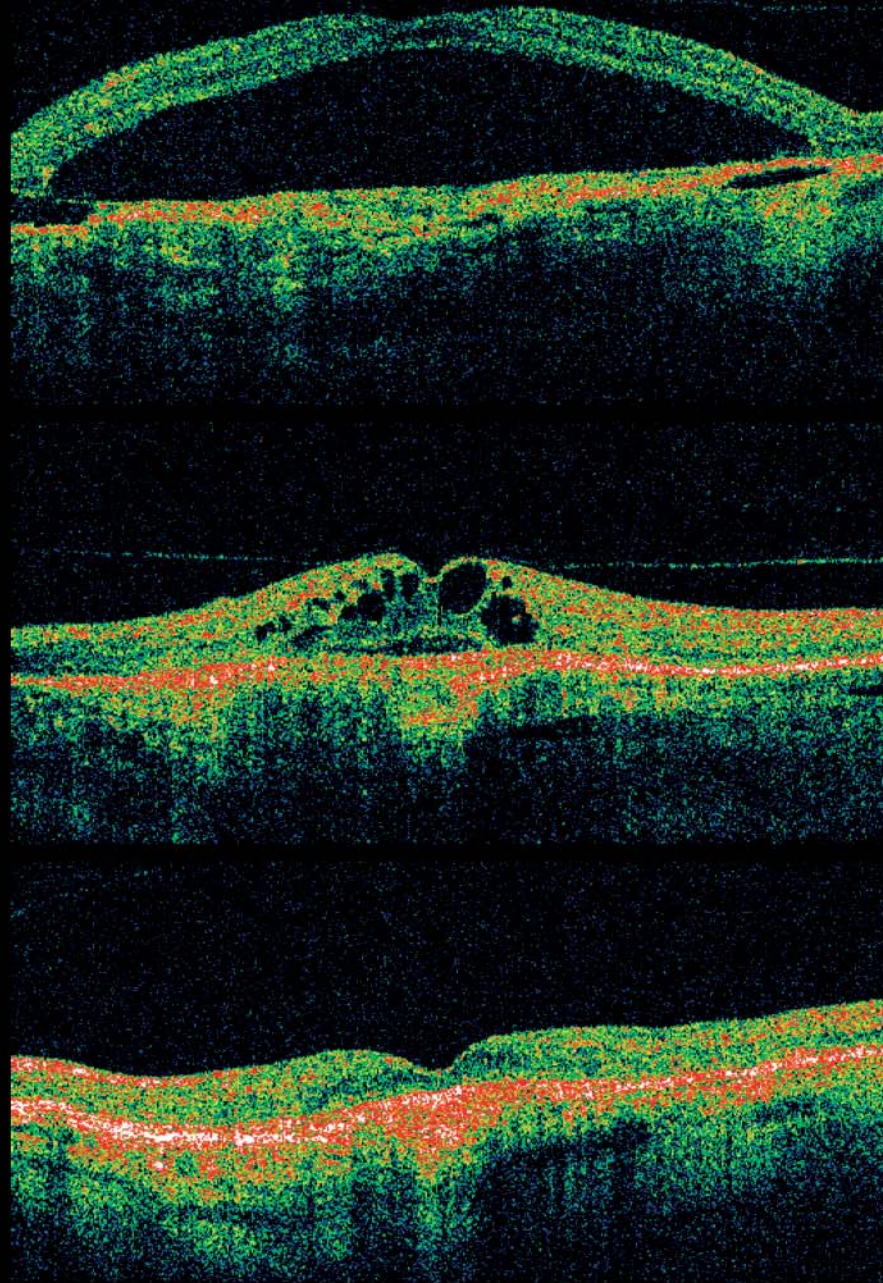
Carl Zeiss New Zealand

Ph: 0800 334 353
 Fx: 09 837 5619
 Email: med@zeiss.com.au
 Website: www.zeiss.com.au



We make it visible.

November



**Stratus OCT™ Image by
Mara Giribaldi, Marsden Eye Specialists, NSW, Australia**

Left eye ARMD over a succession of injections of various therapies. (PDT x 2 pre 2006 then antiVEGF treatment from 2006 onwards - Macugen x 4 then Lucentis x 6 with latest Lucentis with IVTA). The files signify the same retina over several years. 1st image - 2005, 2nd image - 2006, 3rd image - 2007. You will be able to see the difference in thickness documented via these scans over the course of her treatments.



Stratus OCT™

Sunday	Monday	Tuesday	Wednesday	Thursday	Friday	Saturday
30						1
2	3 Anniv. Day* Marlborough (NZ) Recreation Day* Northern TAS Only (TAS)	4 Family & Community Day (ACT) Melbourne Cup Day* Melbourne Metro Only (VIC)	5	6	7	8 ■ AAO 2008, 8 - 11 November, Atlanta, Georgia
9	10	11	12	13	14 Anniv. Day* Canterbury (NZ)	15
16 ■ Eye Institute Annual Scientific Meeting, 16 November, Auckland, New Zealand	17	18	19	20	21 ■ Blue Sky Congress, 21 - 22 November, Adelaide, Australia	22 ■ RANZCO National Congress, 22 - 26 November, Melbourne, Australia
23 ■ Orthoptic Association Australia Annual Scientific Meeting, 23 - 26 November, Melbourne, Australia	24	25	26	27	28 Devonport Show* (TAS)	29

Public holiday | * Regional holiday only | ■ Exhibition

Carl Zeiss Australia

Ph: 1300 365 470
 Fx: 1300 552 796
 Email: med@zeiss.com.au
 Website: www.zeiss.com.au

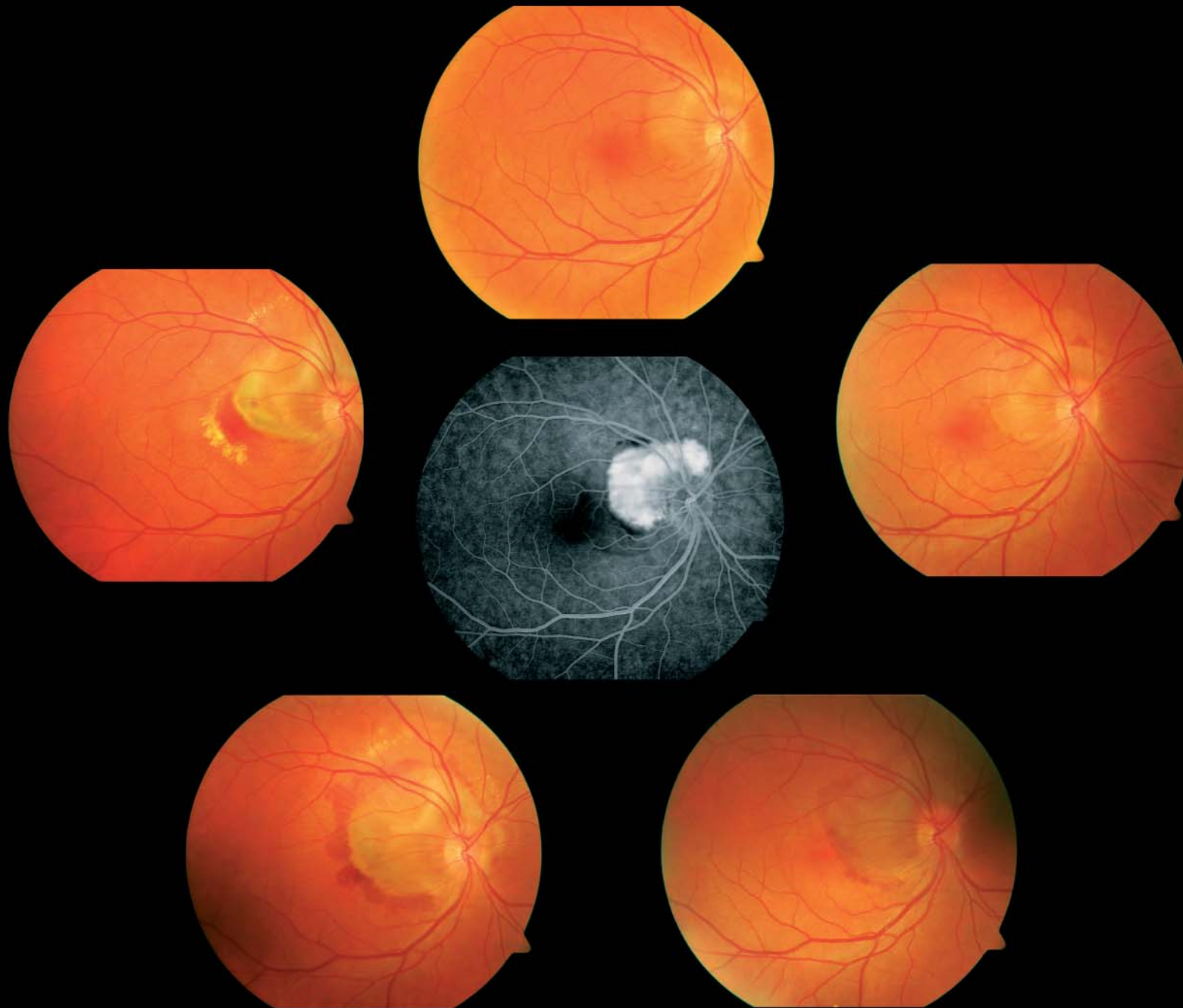
Carl Zeiss New Zealand

Ph: 0800 334 353
 Fx: 09 837 5619
 Email: med@zeiss.com.au
 Website: www.zeiss.com.au



We make it visible.

December



**FF450^{plus} Fundus Image by
Tyran Preece, Sunshine Eye Clinic, QLD, Australia**

This photo starting at 12 o'clock position and going clockwise demonstrates the natural progression of a peripapillary subretinal choroidal neovascular membrane in a 33 year old female patient. Central photo is a fluorescein angiography representation of the lesion. This patient declined treatment as she was attempting to fall pregnant.



FF450^{plus} Fundus Camera

Sunday	Monday	Tuesday	Wednesday	Thursday	Friday	Saturday
	1 Anniv. Day* Chatham Islands & Westland (NZ)	2	3	4	5	6
7	8	9	10	11	12	13
14	15	16	17	18	19	20
21	22	23	24	25 Christmas Day	26 Boxing Day Proclamation Day (SA)	27
28	29	30	31			

Public holiday | * Regional holiday only | ■ Exhibition

Carl Zeiss Australia

Ph: 1300 365 470
 Fx: 1300 552 796
 Email: med@zeiss.com.au
 Website: www.zeiss.com.au

Carl Zeiss New Zealand

Ph: 0800 334 353
 Fx: 09 837 5619
 Email: med@zeiss.com.au
 Website: www.zeiss.com.au

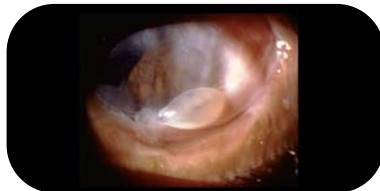


We make it visible.

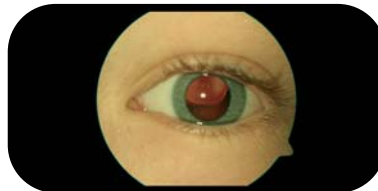
Carl Zeiss Honour Roll



Dr Alan W Johnston AM - Alan Johnston Vision Consulting, VIC, Australia



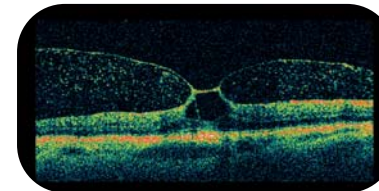
Dr Alex Fraser - Greenlane Clinical Centre, Auckland, New Zealand



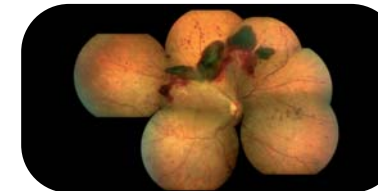
Kate Colless, Sunshine Eye Clinic, QLD, Australia



Allison Howe, The Eye Hospital, TAS, Australia



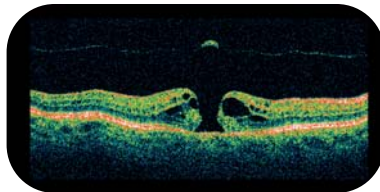
Angela Chappell, Flinders Medical Centre, SA, Australia



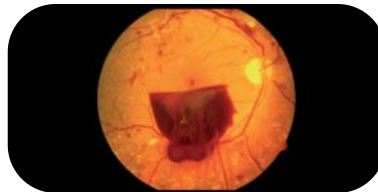
Anton Drew, Queen Elizabeth Hospital, SA, Australia



Bronwyn Jennings, Canberra Eye Hospital, ACT, Australia



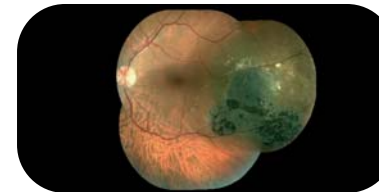
Connie Alexander, Hills Midwest Eye Specialists, NSW, Australia



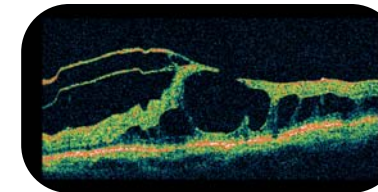
Barbara Kot, Manukau Super Clinic CMDHB, Auckland, New Zealand



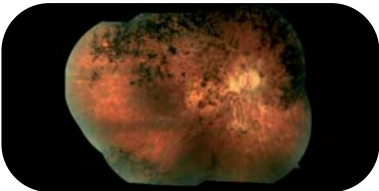
Celia Bloxson, Visions by Brian Job Optical, QLD, Australia



Corinne Brignell, Canberra Eye Hospital, ACT, Australia



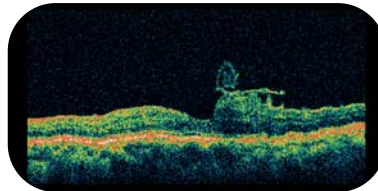
Gabby Moreland, Canberra Eye Hospital, ACT, Australia



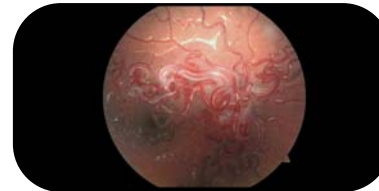
Dr Ian Dallison, Christchurch, New Zealand



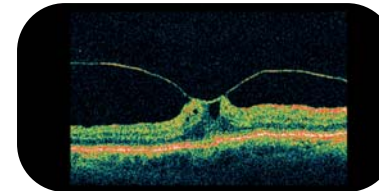
Gabby Moreland, Canberra Eye Hospital, ACT, Australia



Katrina Rogers, Marsden Eye Specialists, NSW, Australia



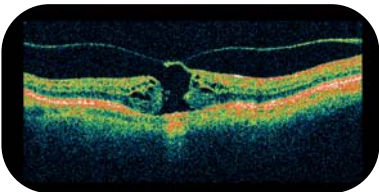
Dr Geoffrey Lam, Princess Margaret Hospital For Children, WA, Australia



Ass.Pro. Lawrence Lee, City Eye Centre, QLD, Australia



Ian Buchanan, Buchanan Optometrist Ltd, Christchurch, New Zealand



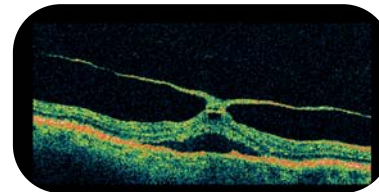
Dr Malcolm Capon, NSW, Australia



Jenny Spicer, Donvale Optical, VIC, Australia



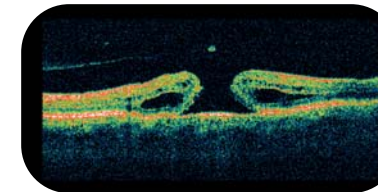
Marina Pascoe, Melbourne Retina Associates, VIC, Australia



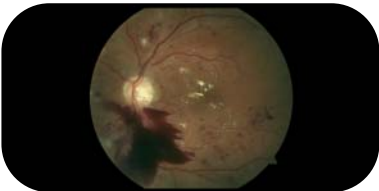
Mara Giribaldi, Marsden Eye Specialists, NSW, Australia



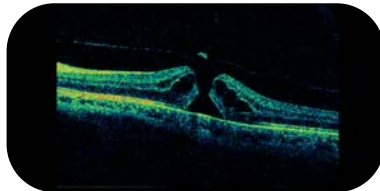
Lillian Lin, Canberra Eye Hospital, ACT, Australia



Dr Michael Haybittel, TAS, Australia



Pat Helsing, Canberra Eye Hospital, ACT, Australia



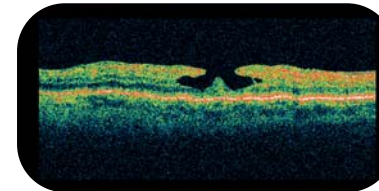
Stav Stylianou, Eye Surgery Associates, VIC, Australia



Wendy Holland, Canberra Eye Hospital, ACT, Australia



Rachael Adams, The Eye Hospital, TAS, Australia



Sue Bull, Hamilton Eye Clinic, Hamilton, New Zealand



Ruth Prowse, Canberra Eye Hospital, ACT, Australia

The response to the 2008 Carl Zeiss Calendar Competition was overwhelming, which made the task of judging very difficult as there were many outstanding entries.

We would like to acknowledge some of these entries as highly commended on the ZEISS Honour Roll.

Thank you to everyone who submitted images this year and remember to save your best images over the coming year for next year's competition.



We make it visible.